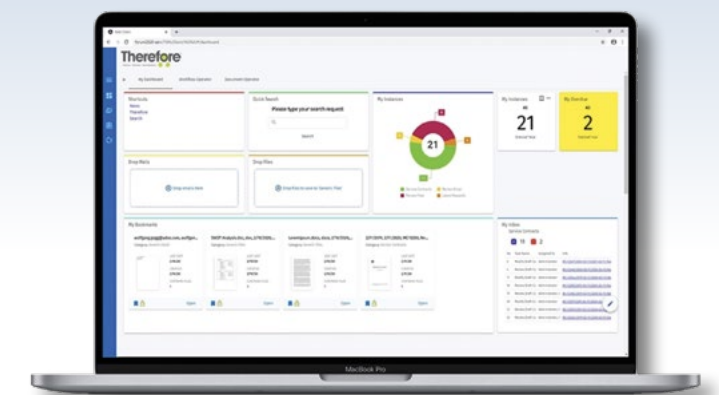




## info Therefore at a Glance

- Scalable for businesses of all sizes
- Real-time document access from any location
- High data security through regular automatic backups and access controls
- AI-powered Smart Capture module for automated invoice processing
- Document capture from paper, digital files, and electronic forms
- Automation of business processes



# Goodbye paper, hello digitization!

**A significantly reduced page volume, more security, and a more efficient workflow: The days of analog processes are officially behind Mader GmbH & Co. KG. Instead of mountains of paper and manual document distribution, a new hardware and software solution from Canon was introduced, which reduced paper consumption by around 90 percent.**

Say goodbye to analog paper processing! Moving to new premises gave Mader GmbH & Co. KG the perfect opportunity to leave the analog era behind. The company, headquartered in Leinfelden-Echterdingen, provides products and services for the entire compressed air system with a focus on maximum energy efficiency.

Before relocating, the incoming invoice workflow was almost entirely analog: Documents were collected in physical folders, manually distributed, and approvals were obtained in person. 'It was cumbersome, insecure, and inefficient,' recalls Managing Director Stefanie Kästle.

Unnecessary printouts were also a major pain point. "For example, unclaimed documents were often left at the printers. Aside from the waste of paper, any sensitive data could easily be accessed."

### Solution for high volumes

At Mader, around 12,000 pages are processed annually. With such a high volume, a seamless workflow is essential. The question of where digital solutions could improve workflow efficiency became a pressing issue—one that was also posed to Kappel & Dierolf. Mader has been working with the Wendlingen-based IT service provider for many years. They also discussed suitable solutions for digitizing document processing.

The requirements were clearly defined: A high level of automation was to be achieved, hardware and software had to be easy to use, and seamless integration with the existing ERP system, Microsoft Navision, was essential. However, large filing cabinets and vast amounts of archived paper documents were not to be moved to the new location. To ensure a smooth transformation and meet all the set requirements, a workshop was scheduled ahead of the project with experts from Kappel & Dierolf and key stakeholders from Mader.

The project team defined the scope of the solution and all workflows that needed to be implemented. 'A solid solution was already in place by the end of the workshop,' reports Rosario De Caro, Head of IT & DMS Sales at Kappel & Dierolf.

A one-week testing phase followed, focused on fine-tuning: Minor challenges in handling both the software and hardware were identified and resolved.

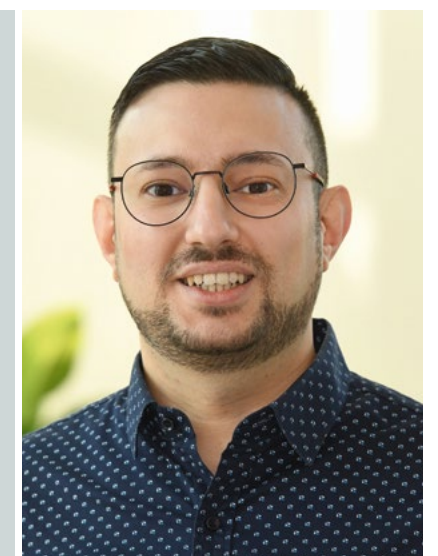
"These were details that only became apparent during actual use," recalls De Caro. "Thanks to extensive planning beforehand, no major rework was necessary."

The core of Mader's digital document workflow was the document management system Therefore. Canon's solution enables easy and secure access to all processes,

including a sophisticated access control system. This proved to be a clear advantage in terms of security: Thanks to the authorization concept and the integrated workflow, only authorized employees have access to the data relevant to them. New scanners were introduced to make the transition and daily use of the DMS more convenient. ▶

*"Thanks to thorough planning in advance, the new solution was installed smoothly, with little need for additional adjustments."*

**ROSARIO DE CARO,**  
Head of IT & DMS Sales at Kappel & Dierolf





**Hardware and Software in Harmony:** The Canon ScanFront 400 series scanning solutions, with their fast scanning speed, are ideal for digitizing Mader GmbH's high document volume.

"The decision was made to use Canon ScanFront 400 devices. The hardware proved to be optimal for Mader's needs: The scanners are network-enabled and, with a performance of up to 45 pages per minute and 6,000 scans per day, ideal for high-volume processing. At the same time, a new secure printing concept was introduced: Central printers in departments are now operated via a chip system. Only those who log in with their chip at the hardware receive their printed document.

In live operations, it became clear that automatically indexing incoming invoices would further accelerate the workflow. No sooner said than done: Kappel & Dierolf implemented the Therefore Smart Capture module. It automatically captures invoice data such as payment terms and creditors. As a result, input errors are virtually eliminated, and the tool speeds up the entire invoice processing workflow.

## Maximum transparency

The new solution is currently in use in the HR department as well as in finance and accounting at Mader. An employee scans analog documents using Canon scanners, integrates them into the Therefore DMS, and routes them to the appropriate personnel for approval. The majority of these documents are DIN A4-sized papers, some of which are double-sided.

"We not only benefit from significantly faster document processing," explains Kästle, "but maximum transparency is also ensured. In Therefore, all stakeholders can see where documents are located and their current processing status."

Both the hardware and DMS software integrated seamlessly with the existing ERP system, Microsoft Navision. Kästle also highlights the fast and competent support provided by Kappel & Dierolf: 'The systems must function smoothly, especially in financial accounting, as work is practically impossible without them. If an issue ever arises, support is quickly available, and the systems are up and running again in no time.'

The employees at Mader quickly came to appreciate the world of digital workflows. 'Newer, younger employees are already accustomed to digital document processing,' explains Kästle, 'but the ease of work thanks to the high level of automation is noticeable to everyone.' Feedback on the new solution has been consistently positive: Compared to analog processes, workflows have been significantly shortened. All relevant data, such as invoices and personnel records, can be accessed at a glance—only by authorized employees, thanks to easily assignable permissions.

"Mader can also check off the requirement to reduce paper consumption. Of the 12,000 pages processed annually, only about ten percent are now paper documents. The majority are already received digitally, securely archived in Therefore, forwarded to the appropriate department, and further processed.

## Keeping Up to Date

Dappel & Dierolf ensure that the solution remains up to date: Once a year, they meet with Mader's key personnel to discuss whether new features, document categories, or adjustments are needed. The annual updates and new feature integrations from Canon Therefore also play a crucial role in Mader's continuous improvement.

"The project is, among other things, a model for future transformations with other clients," emphasizes De Caro. "The planning and implementation were carried out entirely by specially trained personnel from our company."

Mader is already preparing to expand its digital document workflows—the automation of incoming orders is currently in the planning phase.